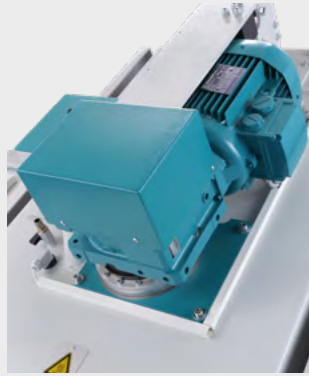
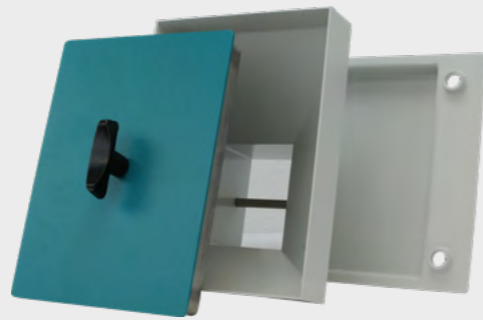


ACCESSORIES



Force Measurement

20-0165



Funnel with isolated cover

20-0160E10



Mixing Bowl

20-0150E10

OUR CUSTOMERS ALSO BOUGHT...

Roller Sector Compactor 30kN



20-4030

Wheel Tracking Test Apparatus air/water



20-4000

Scuffing Device



20-40030

# ASPHALT LABORATORY MIXER

ALWAYS 2 STEPS AHEAD!







**infraTest Prüftechnik GmbH**

Wiesenbachstraße 15  
D-74336 Brackenheim-Botenheim  
Tel.: +49 (0) 7135-95 00-0  
Fax: + 49 (0) 7135-95 00-20  
info@infraTest.net

www.infraTest.net

Our general terms and conditions apply. Misprints, changes and errors excepted.

-  /infraTest\_germany
-  /infraTestprueftechnik
-  /company/infraTest-prueftechnik-gmbh
-  infraTest Prüftechnik GmbH



0017-EN-202012



## Laboratory Mixer 30 I

EN 12697/35 -for the preparation of mastic and rolled asphalt mixtures up to a max. grain size of approx. 31,5 mm.

The cover with sealing is equipped with an electric spindle motor to open and close. A window permits to watch the mixing process inside. This window can be replaced by the optionally available funnel 20-0160E10.

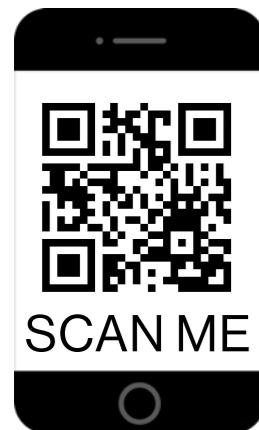
Besides, the cover is provided with connection plugs for gas etc. The constant speed motorized stainless steel mixing drum is equipped with a switch to turn left or right (mixing principle synchronised or in counter direction). An electric heating installation at the bottom and walls with PID regulator provides a constant temperature.

For de-loading, the mixing bowl can be tilted to the front by the installed motor system. The special mixing tool with electric motor and variable speed range is optimized for mixing asphalt samples in smaller and larger quantities.

### Specification

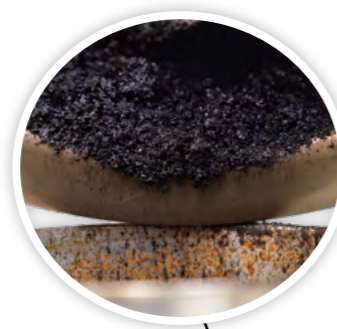
|                         |                       |
|-------------------------|-----------------------|
| Dimensions              | 1015 x 1015 x 1490 mm |
| Power                   | 12 kW                 |
| Power Supply            | 3/N/PE, 400 V, 50 Hz  |
| Weight appr.            | 515 kg                |
| Drum contents           | 30 l                  |
| Mixing quantity         | 75 kg                 |
| Mixing tool speed       | 25...60 1/min         |
| Mixing bowl temperature | 25...250° C           |

20-0160



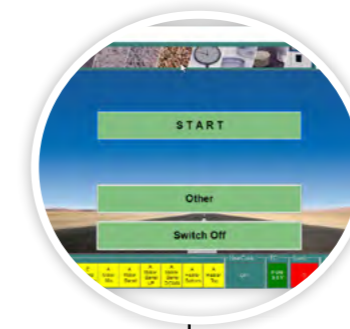
### Advantages:

- ▶ Self-explanatory display
- ▶ Controller leads through the mixing process in different languages: German, English, French
- ▶ Message at process start / end and intermediate steps
- ▶ Optimal torque measurement
- ▶ Two free programmable mixing programs with automated menu guidance
- ▶ Display of the respective process steps



### Advantages:

- ▶ Mixing tool changing without instruments
- ▶ Torque measurement
- ▶ Intuitive operation via touch display
- ▶ Less soiling of the laboratory mixer due to the mud flap



TOUCH PANEL



## Laboratory Mixer 4-15 kg

EN 12697/35 - for the preparation of mastic and rolled asphalt mixtures up to a max. grain size of approx. 16 mm.

Removable stainless steel mixing bowl, exchangeable mixing tool, electrical movement of mixing bowl in mixing and removal position, torque measurement of the mixing tool with load cell, display and adjustment of mixing parameters (duration, temperature, speed, ) and the process steps via touch screen, interval mixing function for heating process, temperature measurement in the asphalt and on the outside of the mixing bowl.

Additional mixing bowls 20-0150E10 available.

### Specification

|                         |                         |
|-------------------------|-------------------------|
| Dimensions              | 935 x 1100 x 1700 mm    |
| Power                   | 3,1 kW                  |
| Power Supply            | 3/N/PE, 400 V, 50/60 Hz |
| Weight appr.            | 380 kg                  |
| Drum contents           | 10 l                    |
| Mixing quantity         | 4-15 kg                 |
| Mixing tool speed       | 30...38 1/min           |
| Mixing bowl temperature | 25...260° C             |

20-0150

